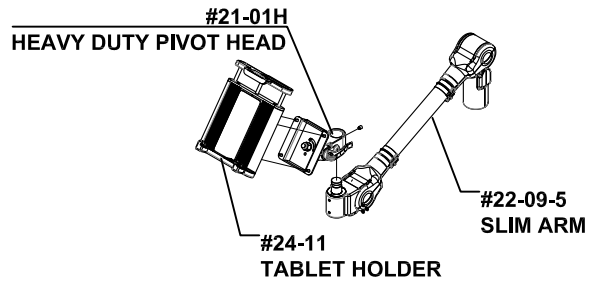
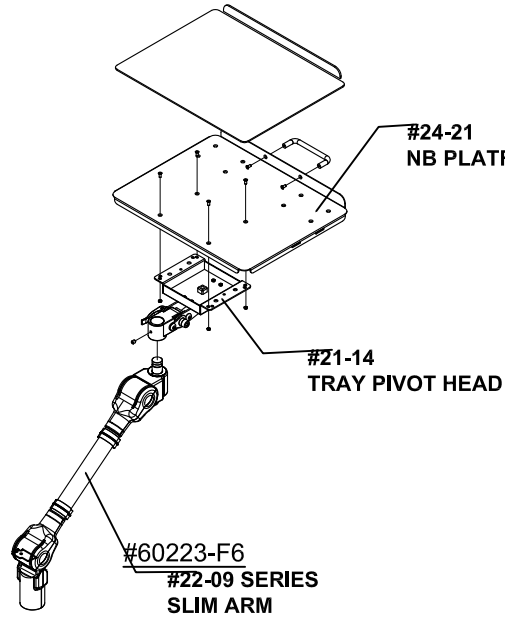


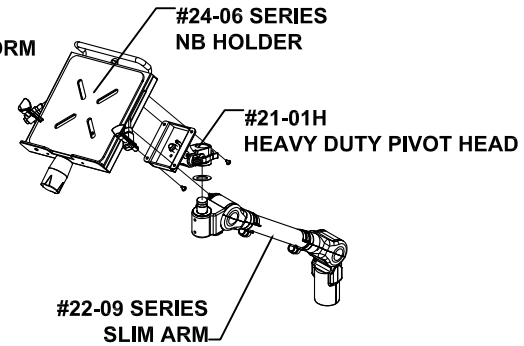
#60223 SLIM ARM ADJUSTABLE HOLDER INSTALLATION GUIDE



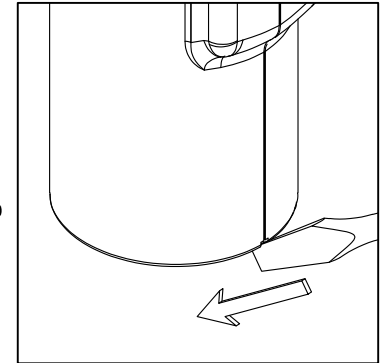
#60223-FE



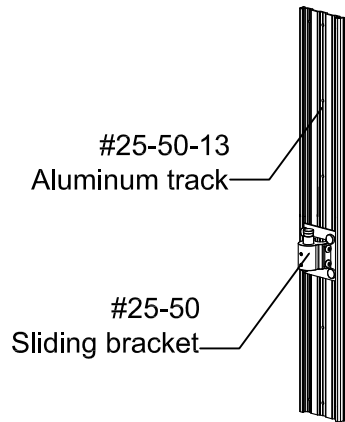
#60223-F6



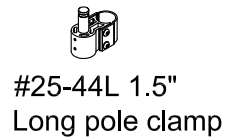
#60223-F3



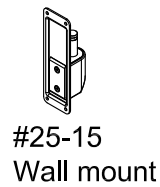
To open the plastic cover on swivel base for driving the set screws



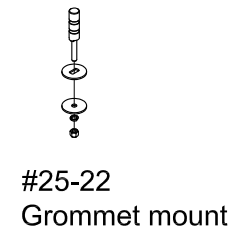
#25-50
Track mount



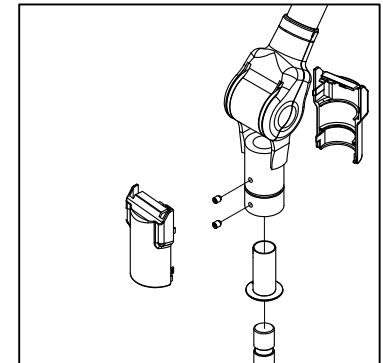
#25-45L 2"
Long pole clamp



#25-25
Die casting base



#25-03 C-clamp
with high pin



You may drive the set screws gently for tight junction or for anti-theft.